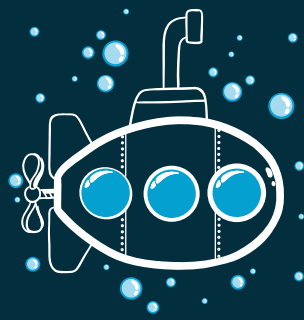


ASCOT WPC



**Nature's
Impression**
open the door to luxury



WATERPROOFCORE

Ascot WPC by Nature's Impression is our latest innovation in composite flooring. Featuring stunning HD digital imaging that is reproduced from the most beautiful and sought after wood species that has become synonymous with Nature's Impression. Ascot WPC is highly durable with a 12mil PU coated wear layer, perfect for your next DIY residential flooring project, or light commercial application.

Our WPC is manufactured using the latest techniques and technologies to achieve maximum dimensional stability made possible by a multi-stage thermal shock tempering process, intensive pressure treatment, and a proprietary formula; resulting in a more dense and stable floor. In order to achieve a high level control over quality, our WPC is 100% integrated; fully manufactured from raw materials to the finish product. These supplemental steps results in a more stable and consistently superior product that has become expected from Nature's Impression.

Wear Layer

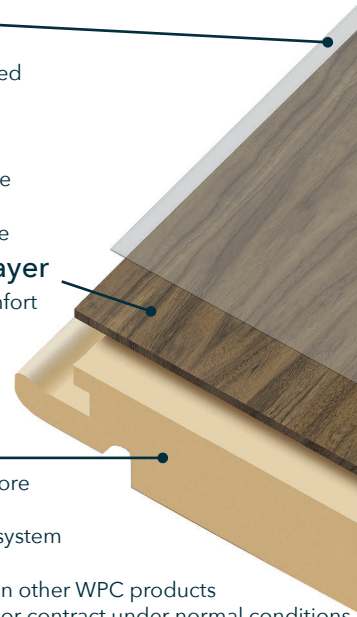
- 12mil (0.3mm)
- PU (polyurethane) coated
- UV cured
- Antimicrobial
- Protects against wear
- Superior stain resistance
- Superior clean-ability
- Superior fade resistance

Luxury Vinyl Top Layer

- Provides warmth & comfort
- HD digital imaging
- Durable & resilient
- Resists indentation
- Virgin vinyl

Water Proof Core

- Extruded water proof core
- Glue-less installation
- UNILIN angle tap click system
- 100% virgin materials
- Higher core density than other WPC products
- Stable: will not expand or contract under normal conditions



| | |
|------------------|--|
| Product | WPC (Water Proof Core) |
| Construction | Product consists of WPC core with UNILIN locking system, top vinyl layer containing digital imaging, wear layer, and polyurethane coating. |
| Warranty | 25 year residential & 10 year light commercial |
| Plank Dimensions | 7" x 48" (180mm x 1220mm) |
| Thickness | 5.5mm |
| Wear Layer | 12mil (0.3mm) |
| Edge | Micro Bevel |
| Embossing | EIR |
| Installation | UNILIN angle tap click |
| Box | 10 Planks / 23.6² ft |



Polo Park



Polo Park



Woodbine



Long Branch



Del Mar



Churchill Downs



Prairie Meadows