

Strong vinyl backing



Beautiful designs



Quick & easy installation



Easy to clean



Pets & kids proof
super strong and durable



Silent & noise reduction



Happy feet
warm and soft flooring



**The perfect match
for every room**



**Designed & made
In Belgium**



Commercial use

Tough yet stylish

A strong floor is key in any room but what we really want is a floor that looks good.

Stylish, pretty and fitting the interior. Stop reading and discover these beautiful designs yourself!

It will be difficult to pick one though. Our designers did their very best, you will love them all!



Noble Oak W32

Premium strength and embossed backing

The Tempo quality brings you the confidence of a floor made for **business and home office spaces**. The super compact backing is known for its **premium strength** and the waffle structured emboss on the backing guarantees **strong adhesion to the subfloor**.

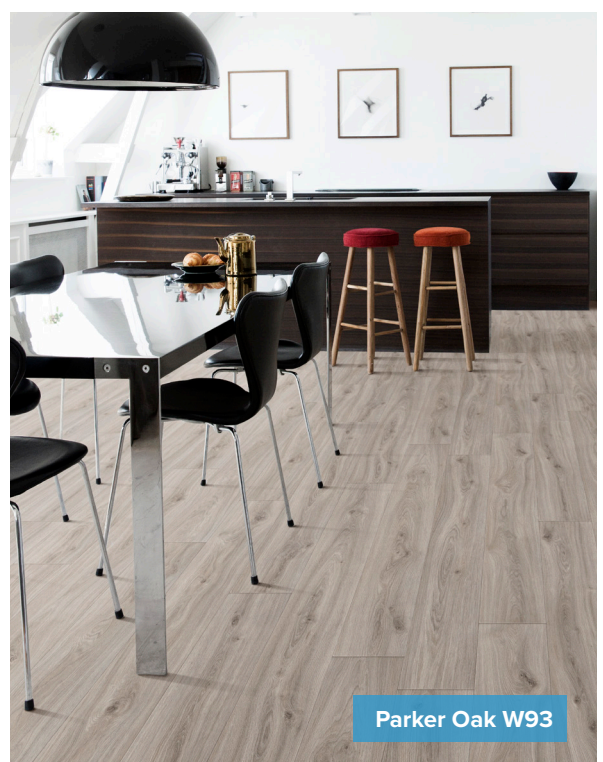
This collection features an **impressively tough wear layer** that is capable of dealing with **the high levels of footfall** encountered in these areas. Tempo is the ultimate multi-layer heterogeneous vinyl floor. Bringing versatile design to projects through **wide-ranging wood and stone designs**.



Oxley 692

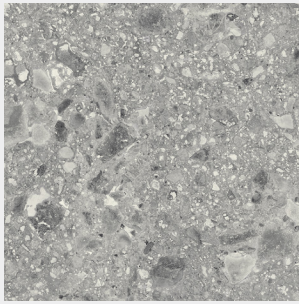
Kids, pets, mud or snow: your floor is ready for the challenge!

Our **Hyperguard+ protection layer (PU Lacquer)** will protect your floor in every situation. Kids, pets, muddy snow shoes, chairs: your floor will be **super easy to maintain**. This protection layer will make your life simple and easy.



Parker Oak W93

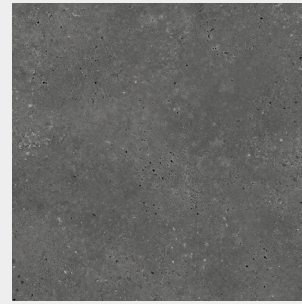
Tempo



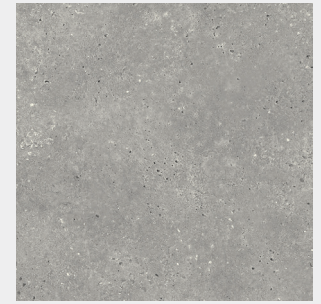
Cappella 696
Available width: 4 m
Pattern repeat: 100 x 99,5 cm



Oxley 692
Available width: 4 m
Pattern repeat: 100 x 99,5 cm



Oxley 697
Available width: 4 m
Pattern repeat: 100 x 99,5 cm



Oxley 695
Available width: 4 m
Pattern repeat: 100 x 99,5 cm



Noble Oak W32
Available width: 4 m
Pattern repeat: 150 x 199 cm
Plank size: 150 x 20 cm



Parker Oak W44
Available width: 4 m
Pattern repeat: 150 x 199 cm
Plank size: 150 x 20 cm



Parker Oak W93
Available width: 4 m
Pattern repeat: 150 x 199 cm
Plank size: 150 x 20 cm

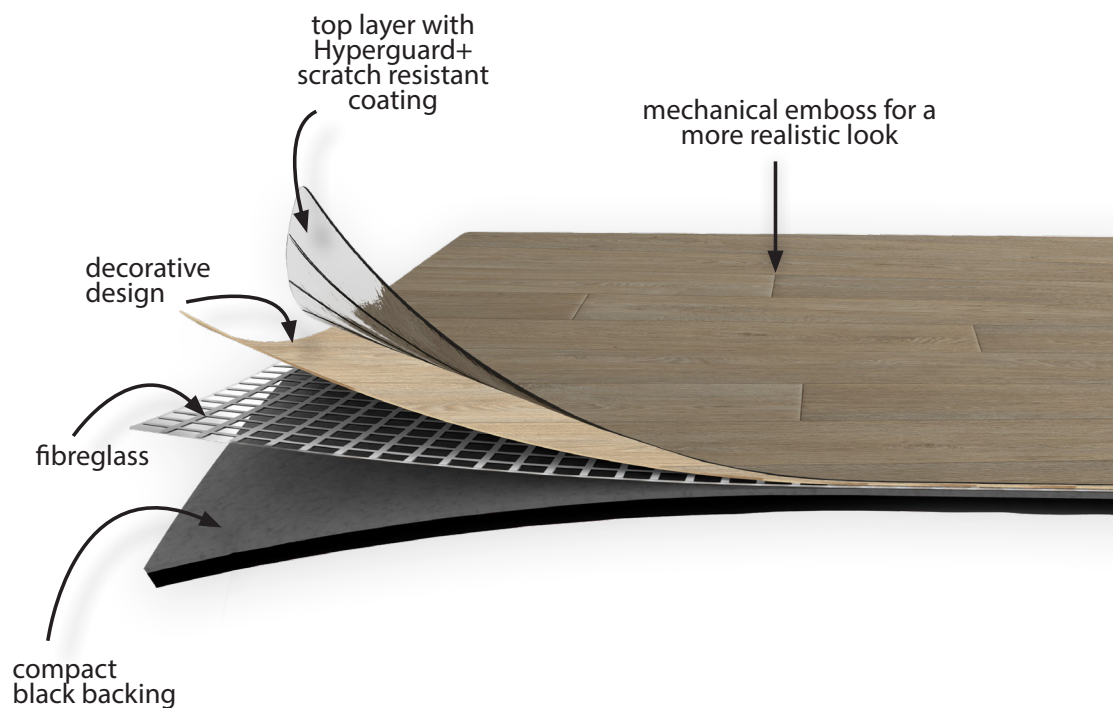


Brunel W33
Available width: 4 m
Pattern repeat: 150 x 199 cm
Plank size: 150 x 20 cm



Noble Oak W97
Available width: 4 m
Pattern repeat: 150 x 199 cm
Plank size: 150 x 20 cm

A high performance multi-layer floor



Product information

European classification	EN ISO 10874	Domestic Moderate
		Commercial General
Total thickness	EN ISO 24346	ca. 2,00 mm
Wearlayer	EN ISO 24340	ca. 0,50 mm
Wear layer treatment		HyperGuard+
Total weight	EN ISO 23997	ca. 2.358 g/m ²

Technical information

Slip resistance	EN 13893	DS
Sliprestraint	DIN 51130	R10
Inflammability	EN 13501	Bfl-S1
Acoustical insulation	EN 717	ΔL_w 16 dB
Underfloor heating	EN 12524	Suitable
Thermal conductivity	EN 12524	0,25 W/mK
Thermal resistance	EN ISO 12466	0,0158 m ² K/W
Resistance to household chemicals	EN ISO 26987	Very good
Looselay		Up to 40 m ²
Warranty (Commercial use)		5 years

